

OUR BUSINESS IS YOUR BUSINESS

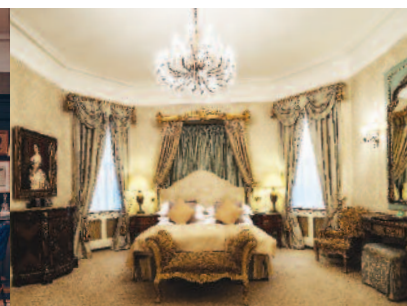


The family owned and run 18th Century Fitzpatrick Castle Hotel in Killiney is the epitome of elegance & charm. Overlooking Dublin Bay and situated at the Brow of Killiney Hill, just 14KM from Dublin's bustling City Centre and 29KM from Dublin Airport.



FACILITIES

- 113 Bedrooms & Suites
- 2 Restaurants & 2 Bars
- Full Leisure Facilities including 20m Indoor Pool
- Fully Equipped Gym
- Dedicated Business Centre with 9 Meeting Rooms
- 2 Large Conference Facilities for 600 people
- Private Dining Facilities for 400 people
- Free Car Parking



Fitzpatrick Castle Hotel, Killiney, Co. Dublin, Ireland.
Tel: +353 1 230 5400 Email: conference@fitzpatrickcs.com
www.fitzpatrickcastle.com



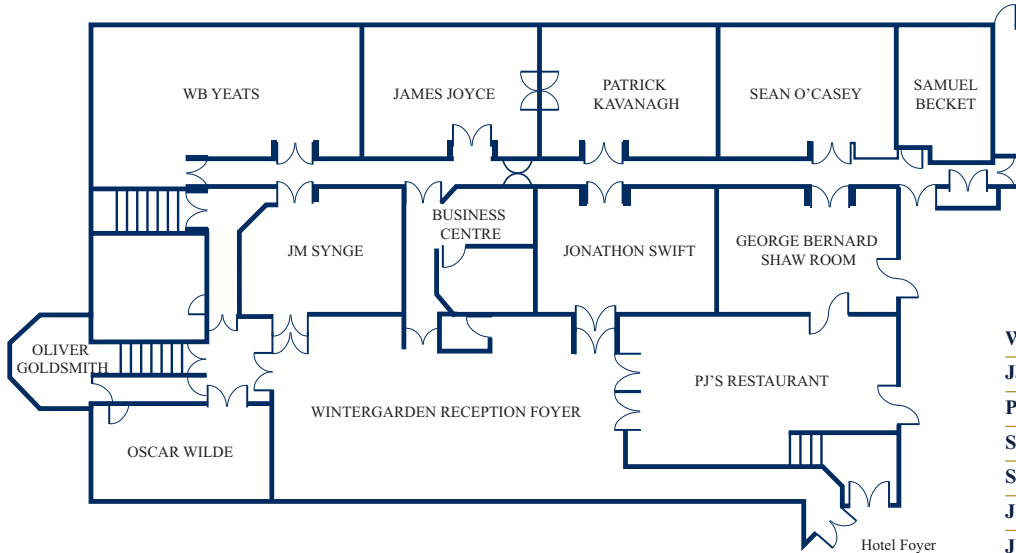


The Prince Regent, the largest of the two suites can cater for up to 600 delegates theatre style or 400 people for a banquet.

The Albert & Behan Suite is more intimate & can accommodate up to 300 delegates theatre style or 220 people for a banquet. Also filled with natural daylight & leading to a private garden, the suite has it's own private entrance & 1847 castle foyer, ideal for use as a registration area, or for exhibitions & receptions. Both suites are linked by a private staircase.

The PJ Fitzpatrick Boardroom is a private boardroom overlooking the private grounds & can accommodate 12 people boardroom style.

BUSINESS CENTRE MEETING ROOMS



	WBY	JJ	PK	SOC	SB	JMS	JS	OW	OG
Boardroom	48	30	30	30	15	25	30	20	6
Classroom	48	40	40	40	20	30	40	20	-
Theatre	120	60	60	60	30	50	60	30	-
U Shape	40	25	25	25	15	25	30	20	-

WBY	16.22m (53' 3") x 7.78m (25' 6")
JJ	10.20m (33' 6") x 7.78m (25' 6")
PK	10.52m (34' 6") x 7.78m (25' 6")
SOC	10.42m (34' 2") x 7.78m (25' 6")
SB	5.42m (17' 9") x 7.78m (25' 6")
JMS	9.72m (31' 11") x 7.75m (25' 5")
JS	11.20m (36' 9") x 7.75m (25' 5")
OW	11.85m (38' 11") x 5.38m (17' 8")
OG	5.0m (16' 6") x 3.5m (11' 6") Height 2.4m (8')

All other suite heights are 2.9m (9' 6")

CONFERENCE & BANQUETING SUITES

The Albert & Behan Suite

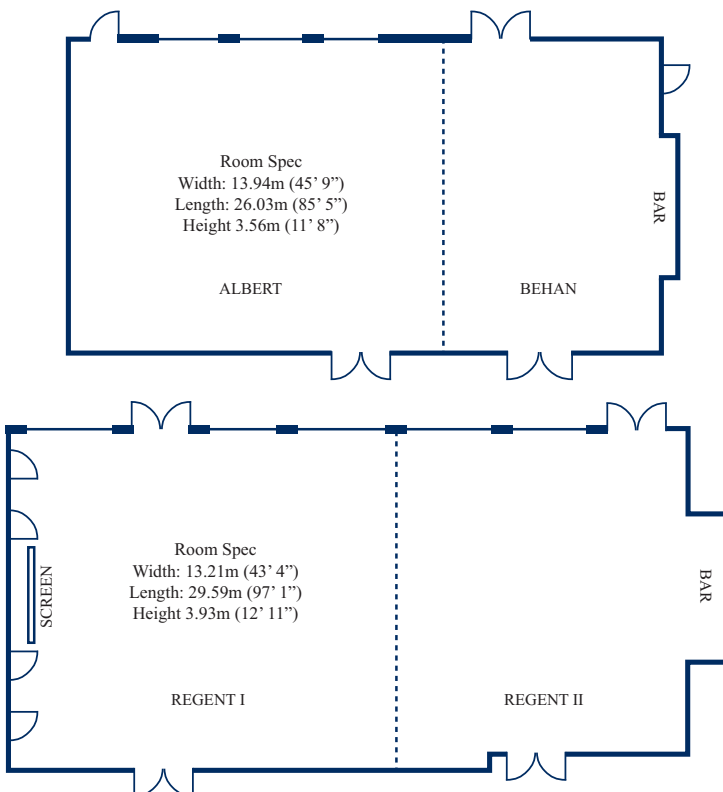
	Albert	Behan	Albert & Behan
Classroom	120	50	170
Theatre	200	100	300
U Shape	45	35	
Lunch & Dinner	120	50	200
Cabaret	80	40	120

Prince Regent Suite

	Regent I	Regent II	Regent I&II
Classroom	110	80	190
Theatre	250	150	500
U Shape	75	40	115
Lunch & Dinner	150	100	350
Cabaret	80	60	140

PJ Fitzpatrick Boardroom

Boardroom	12		
-----------	----	--	--



Room Spec
Width: 4.83m (15' 10")
Length: 11.92m (39' 1")
Height 3.28m (10' 9")